

**HAZEMAG**



**HAZEMAG Hydraulic drifter | HDP 15**



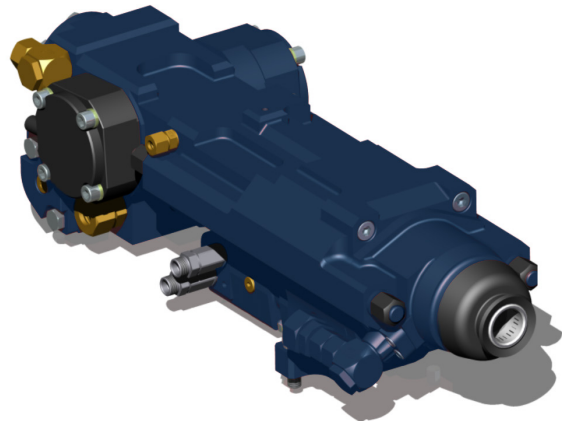
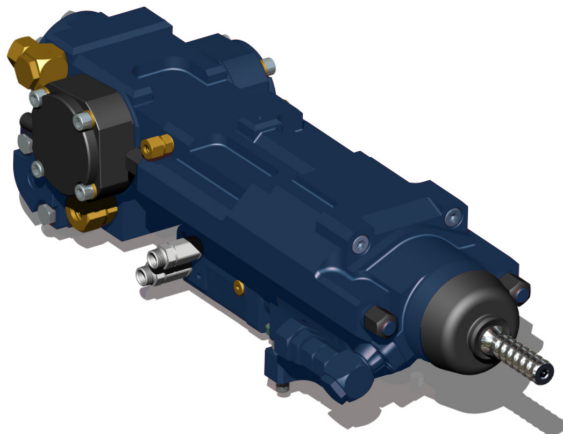


## Hydraulic drifter HDP 15

**Built to withstand the rigors of harsh mining and tunneling conditions while providing maximum drilling performance**

- powerful impact mechanism
- available with male or female shank adapters
- available with integrated rod/tube extraction device for preventing the drill string from getting stuck
- adjustable to actual rock conditions
- adaptable to various bolting applications
- shortest drifter in its class for best utilization of drill feed length
- excellent dependability
- extended life spans of wear components
- reinforced design for longer service intervals and simplified maintenance

Technical Data hydraulic drifter HDP 15	
Impact power max.	15 kW
Hydraulic pressure max.	200 bar
Oil flow	100 l/min
Impact rate	70 Hz
Weight incl. shank adapter	180 / 213 kg
Length incl. shank adapter (female)	893 mm
Length incl. shank adapter (male)	986/1,150 mm
Width	294 mm
Height	232 mm
Height above drill center	87 mm
Lubricating air min.	250 - 350 (2 - 2.5 bar)
Flushing pressure	8 - 20 bar





# Shank adapters

Rotation device (continuous operation)							
	motor 1 80 cm <sup>3</sup>	motor 2 100 cm <sup>3</sup>	motor 3 125 cm <sup>3</sup>	motor 4 160 cm <sup>3</sup>	motor 5 200 cm <sup>3</sup>	motor 6 250 cm <sup>3</sup>	motor 7 315 cm <sup>3</sup>
Oil flow l/min	65	75	75	75	75	75	75
Rotation speed rpm	375	350	280	220	175	140	110
Operating pressure bar	175	175	175	160	160	140	140
Torque Nm	360	450	560	650	820	895	1,125

## Available shank adapters

Female shank (Ø 55 mm; L = 341mm)  
 Female shank (Ø 55 mm; L = 341mm)  
 Female shank (Ø 55 mm; L = 341mm)

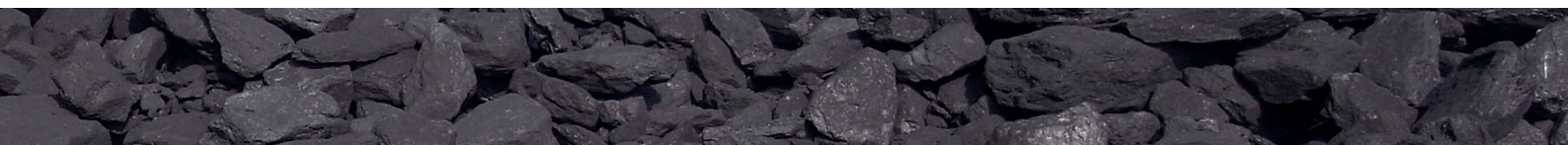
thread type R32, mat. no. 101542  
 thread type R38, mat. no. 61900  
 thread type T38, mat. no. 107346

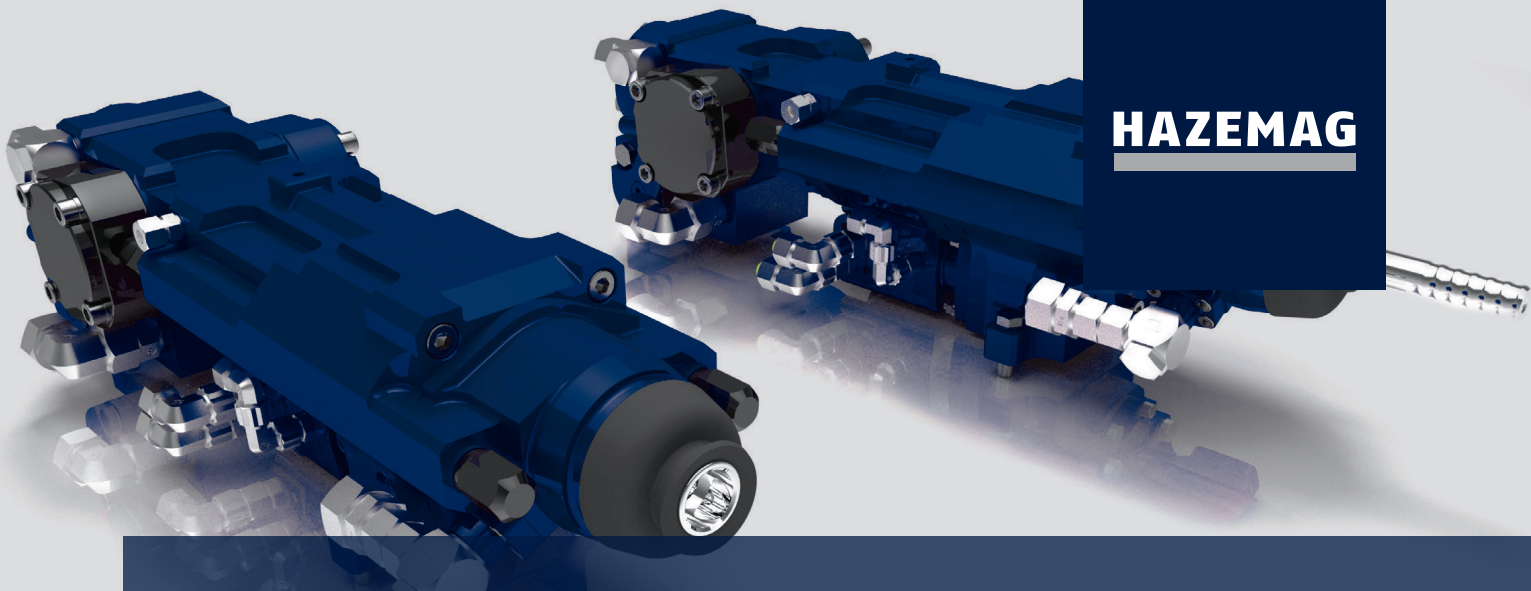
Male shank (Ø 38 mm; L = 435 mm)  
 Male shank (Ø 38 mm; L = 435 mm)  
 Male shank (Ø 38 mm; L = 435 mm)

thread type R32, mat. no. 61909  
 thread type R38, mat. no. 99980  
 thread type T38, mat. no. 107347

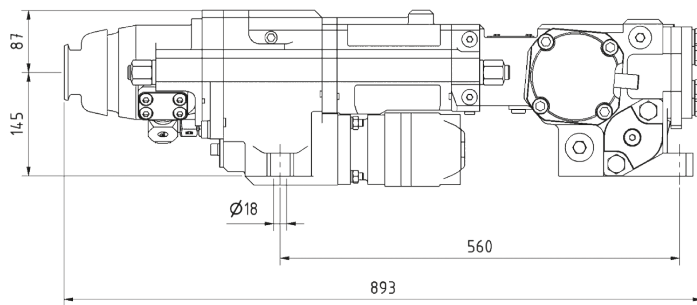
Male shank (Ø 38 mm; L = 525 mm)  
 Male shank (Ø 38 mm; L = 525 mm)  
 Male shank (Ø 38 mm; L = 525 mm)

thread type R32, mat. no. 61879  
 thread type R38, mat. no. 107223  
 thread type T38, mat. no. 107348

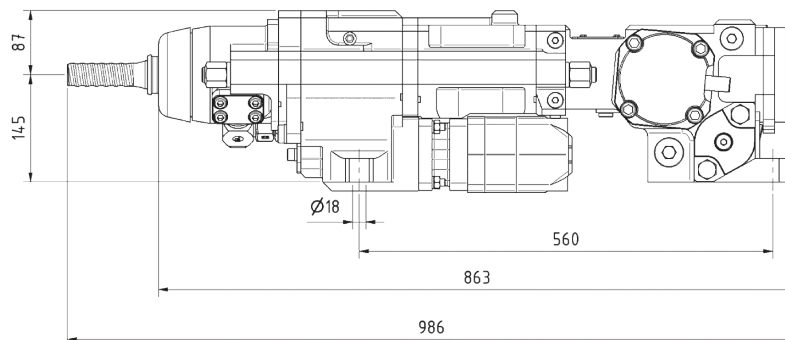




## HDP 15 - Female and male shank adapter



HDP 15 (with female shank adapter)



HDP 15 (with male shank adapter)